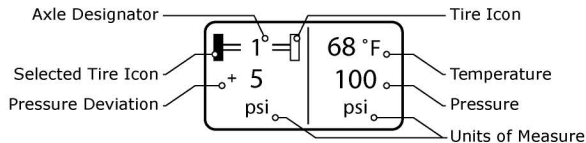
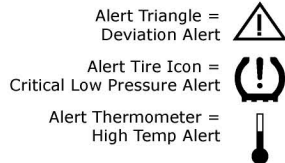


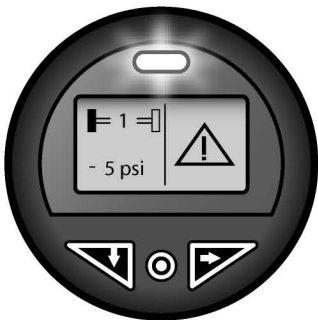
TIRE ALERTS & WARNINGS: SMARTWAVE / SMARTIRE TPMS**Reacting to Alerts & Warnings: IMPORTANT**

It is important to always react to the alerts and warnings provided by the SmarTire / SmartWave TPMS system. When an alert is triggered, immediately bring the vehicle to a stop in a safe location in order to assess the nature of the problem. It is recommended that tire conditions always be corrected before the vehicle is driven.

Screen Overview**Screen Icons****First Alert Level: Pressure Deviation Alert**

Indicated By: Flashing Light, Alert Triangle, + or - Deviation Value.

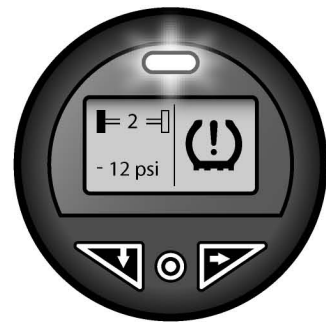
The axle designator and the highlighted wheel position indicate the tire that is under or over inflated. The pressure deviation value indicates the amount of under / over inflation. The default setting triggers the alert at 10% under-inflation.

**TIRE ALERTS & WARNINGS - Continued.****Second Alert Level: Critical Low Pressure Alert**

Indicated By: Flashing Light, Alert Tire Icon, Deviation Value.

The axle designator and the highlighted wheel position indicate the tire that is under or over inflated. The pressure deviation value indicates the amount of under / over inflation.

IMPORTANT: This alert indicates that the tire is critically under inflated and should be addressed immediately. The default setting triggers the alert at 25% under-inflation. It is not recommended that a vehicle be driven with an under-inflated tire.

**High Temperature Alert**

Indicated By: Flashing Light, Alert Thermometer, Temperature Value.

The axle designator and the highlighted wheel position indicate the tire that is critically hot. The temperature value indicates the tire's running temperature.

The default setting triggers this alert at 195°F (90°C). High tire temperatures are typically caused by under-inflation and the system will usually provide a pressure alert in advance of a temperature alert. If triggered on its own, it can be an indication of an alternative problem such as a dragging brake or a bearing failure.

